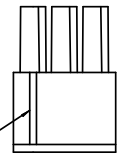
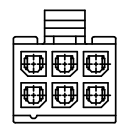
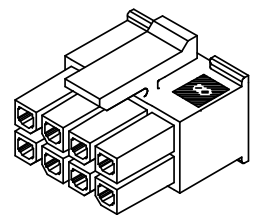
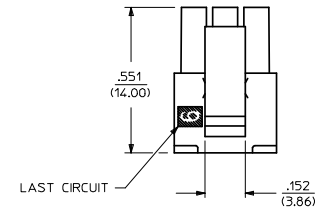
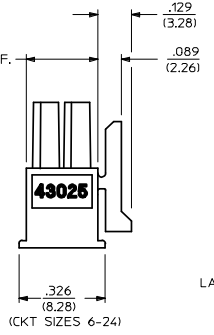
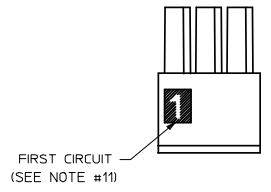
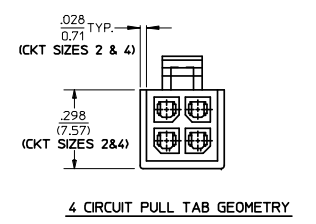
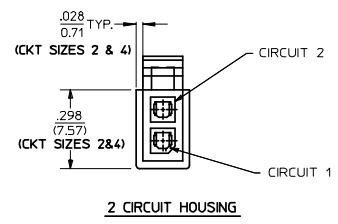
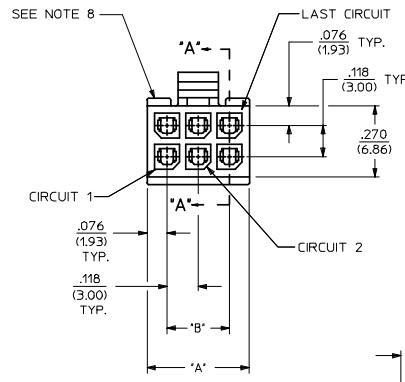


PART CHARACTERISTICS	
NUMBER OF POSITION	ASSEMBLY ITEM NUMBER
02	43025-0200
04	43025-0400
06	43025-0600
08	43025-0800
10	43025-1000
12	43025-1200
14	43025-1400
16	43025-1600
18	43025-1800
20	43025-2000
22	43025-2200
24	43025-2400

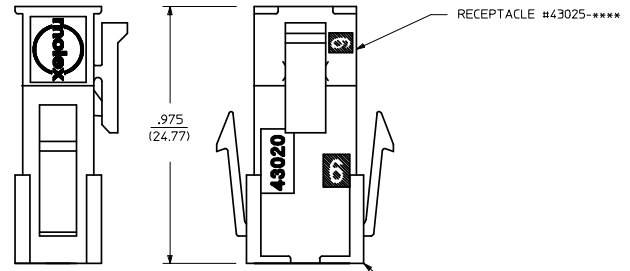
CKT. NO.	DIM. 'A'	DIM. 'B'
2	.152/(3.86)	N/A
4	.270/(6.85)	.118/(3.00)
6	.388/(9.85)	.236/(6.00)
8	.506/(12.85)	.354/(9.00)
10	.624/(15.85)	.472/(12.00)
12	.742/(18.85)	.591/(15.00)
14	.860/(21.85)	.709/(18.00)
16	.978/(24.85)	.827/(21.00)
18	1.096/(27.85)	.945/(24.00)
20	1.215/(30.85)	1.063/(27.00)
22	1.333/(33.85)	1.181/(30.00)
24	1.451/(36.85)	1.299/(33.00)



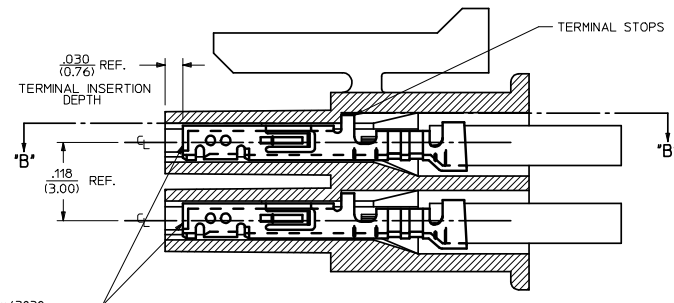
HOUSING SHOWN WITH OPTIONAL FIRST CIRCUIT IDENTIFIER RIB
(SEE NOTE #11)



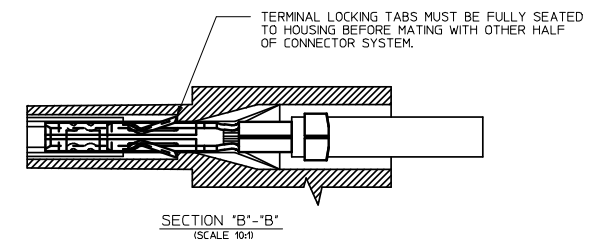
RECEPTACLE ISO VIEW
(8 CIRCUIT SHOWN)
(SEE NOTE 9 FOR TESTING)



MATED MICRO-FIT CONNECTOR



SECTION "A"-"A"
WITH TERMINAL
(SCALE 10:1)



SECTION "B"-"B"
(SCALE 10:1)

NOTES:

- HOUSING MATERIAL: UNFILLED POLYESTER, RATED U.L. 94V-0, COLOR IS BLACK.
- THIS RECEPTACLE MATES WITH 43020, 43045.
- THIS RECEPTACLE IS DESIGNED IN METRIC.
- THIS RECEPTACLE TO BE USED WITH MOLEX FEMALE TERMINAL #43030-****.
- SEE SECTION "A"-"A" FOR TERMINAL ORIENTATION IN HOUSING.
- ALL CONNECTORS MUST MEET THE PERFORMANCE REQUIREMENTS OF MOLEX PRODUCT SPECIFICATION #PS-43045.
- FOR OVERMOLDING PARAMETERS SEE ENGINEERING SPECIFICATION #SDES-43025-1000.
- TOP PULL TABS ARE NOT AVAILABLE ON 2 AND 4 CIRCUIT PARTS.
- MOLEX RECOMMENDS THE USE OF MICRO-FIT TEST PLUG, SERIES NO. 44242-**** WHENEVER TESTING IS PERFORMED.
- TEST PLUGS MUST NOT BE USED FOR MAKE OR BREAK UNDER LOAD. SOME HOUSINGS MAY HAVE A SMALL GATE BLEMISH NEAR THE GATE THAT DOES NOT AFFECT FUNCTIONALITY.
- HOUSINGS MAY HAVE EITHER AN IDENTIFIER RIB OR "1" SYMBOL ENGRAVE TO INDICATE CIRCUIT #1.

REVISE, VOID SHT 2 IEC NO. UCPC2008-1885 DRAWN/K PPR 2007/12/12 CHKD/SSJUSEK 2007/12/14 APPR/FSM LTH 2007/12/14	QUALITY SYMBOLS	GENERAL TOLERANCES (UNLESS SPECIFIED)	DIMENSION STYLE	SCALE	DESIGN UNITS	THIRD ANGLE PROJECTION
	$\nabla=0$ $\nabla=0$	4 PLACES ± --- ± 3 PLACES ± --- ±.010 2 PLACES ±.25 ±.014 1 PLACE ±.35 ± --- ANGULAR ±1/2°	IN/MM DRAWN BY DATE A F G 1993/01/14 CHECKED BY DATE B A P 1993/01/14 APPROVED BY DATE R A S 1993/01/14	4:1	METRIC	
	DRAFT WHERE APPLICABLE MUST REMAIN WITHIN DIMENSIONS	SEE CHART	MICRO-FIT (3.0) 2 THRU 24 CIRCUIT RECEPTACLE		MOLEX INCORPORATED	
			MATERIAL NO. SDA-43025-****	DOCUMENT NO.	SHEET NO. 1 OF 1	